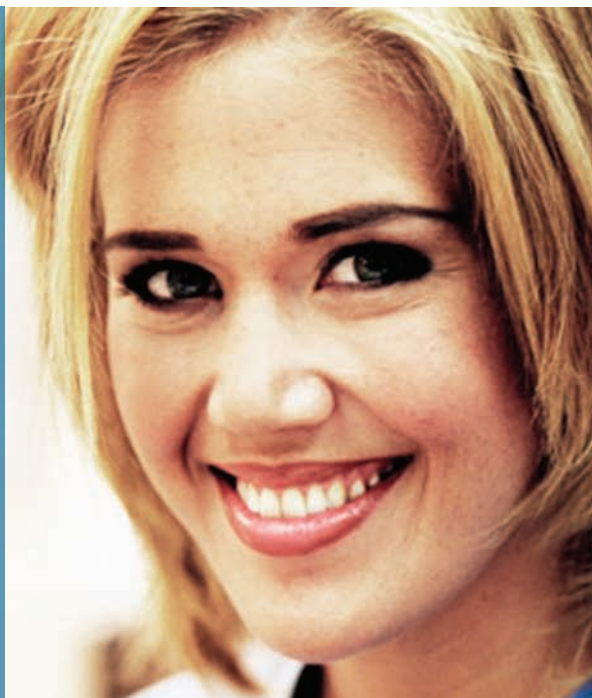


▶ **Get paid  
faster  
with less  
effort**



## **InstaMed® SmartReader**

### **Real-Time Eligibility, Credit, Debit & eCheck**

Just use the InstaMed Smart Reader with your Windows PC to check eligibility and collect funds. Supports health cards, credit/debit cards and patient checks. Get patient eligibility directly from the payer's systems.

**InstaMed Smart Reader is future-proofed** with patent pending technology that supports auto-updates of new health card formats.

### **GETTING STARTED IS EASY:**

- No system changes
- Clearinghouse changes are not required
- Easy setup

### **SIMPLE, CONVENIENT, RELIABLE & SECURE...**

To learn more, call **(866) INSTAMED** and ask to be connected to a sales associate, or visit us at **[www.instamed.com](http://www.instamed.com)**

InstaMed is a registered ISO/MSP of US Bank

**Real-time access into  
Medicare, Blues,  
United, Aetna, CIGNA  
and over 250 payers**

**Eliminate multiple web sites**

**Collect payment from any  
card or patient check**

**Simple, Convenient,  
Reliable & Secure**

**InstaMed®**  
Healthcare Payments Simplified 

**Claims | Eligibility | Status | Remittance | Credit | Debit | eCheck | ACH**